



CATALOG

ArtNetdlr

ARTIST NETWORK
DUN LAOGHAIRE-RATHDOWN

ArtNetdlr's 2021 Biennale Collaborative Project  **Metamorphosis**

ANN ARMSTRONG / KATHY STRACHAN

ANN ARMSTRONG

Cerebral Flow

Oil on Board

Triptych, 110cm x 60cm

KATHY STRACHAN

Individual Piece

Oil on Canvas

Four paintings side by side 40cm x 40cm



“Altered States”

The ebb and flow of a topography alters like a face evolves through time. Mountains do not float unsupported, nor do they rest on land. Rivers do not flow without a beginning and an end, they are flux.



ANNE CURRAN / ANDREA KAVANAGH

“Fragmented Earth, A Trilogy”

This Trilogy is to reflect our vulnerability in our world. The pieces were made to create tension where the juxtaposition of the works reflect the solidity and fragility of our changing world.

Fragmented Earth, A Trilogy

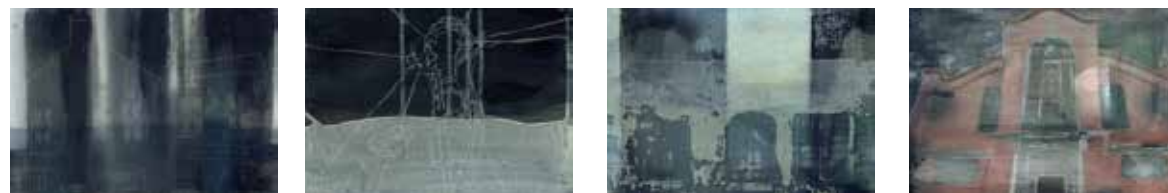
- 1 Burnt drawing 40cms in diameter on kitikata paper encased in perspex 80cms x 80cms
- 2 Porcelain Ceramic hanging sculpture 50cms x 80cms Acrylic disc with 133 lines of individual porcelain pieces **€1,500**
- 3 Encaustic painting with collage 25cms x 25cms



AOIFE DWYER / VALERIE COYLE

“Reflections”

We collaborated through bringing together and superimposing our visual memories and intuitive responses to a Dun Laoghaire childhood.



“Reflections”

Print
25cm x 17cm

€150 each, limited edition of 10 per print

ARTEM PETSUKHA / DEIRDRE CROFTS

“The Flow of Life”.

Transition and transformation are the essential laws of nature and the driving force of development. Some of the changes are happening in cycles for millions of years, others are quite recent. The flow of life is unavoidable while many unwanted changes are. People cause excessive deforestation and pollution instead of keeping the planet clean and healthy. When we make an object, we must design how it decomposes in a harmless way after usage, go back to elements through decay, to continue the flow and give new life.

€250 for all six or €100 for three prints and €150 for the three ceramics

“The Flow of Life”

3 clay panels
21cm x 15cm
3 photo prints
21cm x 15cm



AISLING MCENTEE WALSH / DIANE MAGEE / KAREN EBBS



€400 each or
 €1,050 for all three

“The Making of a Fresco”

Three visual artists, Aisling McEntee Walsh, Karen Ebbs and Diane Magee, known collectively as SUB-LIME, respond to the brief - Metamorphosis by making frescoes using traditional methods with a contemporary edge. The process has been documented in the accompanying video - The Making Of A Fresco.

https://www.youtube.com/watch?v=Zj1U3dLMhgE&ab_channel=KarenEbbs

AISLING MCENTEE WALSH

DIANE MAGEE

KAREN EBBS

The Making of a Fresco

3 Frescoes
 30cm x 40cm

ASHLEIGH DOWNEY / ELEANOR DAWSON / JUSTYNA KOSMULSKA / SYLVIA HILL



‘... pathless land ...’

Our work represents our own metamorphic process through the Covid lockdowns, exploring the potential, process and transformative power of these times. After an initial phase of pooling ideas on WhatsApp, we focussed on four concepts: seed, egg, meander and feminine energy. The final audio-visual piece comprises a ‘Victorian hang’ and a looped soundtrack: this, as well as our WhatsApp journal, are also accessible online at <http://greenhouseculture.ie/events/metamorphosis/>.

ELEANOR DAWSON

ASHLEIGH DOWNEY

SYLVIA HILL

JUSTYNA KOSMULSKA

‘... pathless land ...’

Audio-visual installation (mixed media); online version also available
 Victorian hang – 2m x 3m

BARBARA LEE / GILL HALL

Barbara Lee and Gill Hall have painted three Diptychs representing the artists’ shared interest in nature. They each created three paintings by responding to each other’s work. This responsive approach to the work was a metamorphic process in itself



Bell Garden

Diptych, oil on canvas
 83cm x 50cm



Forest Walk

Diptych, oil on canvas
 83cm x 50cm



Changing Leaves

Diptych, oil on canvas
 83cm x 50cm

BAIRBRE MURRAY / ELIOT SMITH

These pieces consider metamorphosis in nature as the seed pushes up through the earth, develops into the plant and eventually sheds its foliage and whirls to the ground, beginning the cycle again. We reflected on the process of change as we each worked on the others pieces, each using our preferred medium on the others work, exploring the interaction of cyanotype and cyanolumen printing with oil painting



BAIRBRE MURRAY **Up, Up to the Light**

Oil on canvas with
cyanotype print
84.5cm x 20cm

ELIOT SMITH

Light and Leaves Imprinted

Cyanolumen print with Oil
paint
85.78cm x 20.32cm



CATHERINE PHIL MACCARTHY / YVONNE PETTITT



Our collaborative piece on Metamorphosis concerns poems by MacCarthy relating to the theme, some already written and published, and then Pettitt's visual response to them working from sketches to oil on panel. The process itself in turn caused MacCarthy to write some new poems encompassing the overall idea of desire, order and chaos.



YVONNE PETTITT

Hare

Oil on gessoed board
30 cm x 24 cm

YVONNE PETTITT

Volubilis

Oil on gessoed board
35 cm x 25 cm

YVONNE PETTITT

Yeats's Tower, Thoor Ballylee

Oil on gessoed board
35 cm x 25 cm

YVONNE PETTITT

Daphne

Oil on gessoed board
35 cm x 25 cm

€320 each

IDA MITRANI / ANN MULCRONE

'Mythos Series'

The work is the metamorphosis. Mythos is seeking the inherent truth in the work. The 3 digital images and mixed media ink collage juxtapose drawings inspired by nature and the environment questioning and reflecting a concern with pollution and our future flawed legacy. The process of layering and mark making allows a glimpse of what may not be apparent to the naked eye but is inherent in our perception of nature and our relationship to nature.



€850 each of the two larger pieces and €120 each for the three smaller pieces



IDA MITRANI AND ANN MULCRONE

Mythos 1 and 2

Mixed media ink drawing on arches paper
82 cm x 63 cm

IDA MITRANI AND ANN MULCRONE

Mythos 3, 4 and 5

Digital montage
40 cm x 31 cm

CIARA GORMLEY



Katsura, Ostara

Watercolour, pencil & oil on Fabriano Paper
57cm x 76cm

This is a composite study of sketches of the early morning light slanting through the young leaves of a Katsura tree and the pattern of shadow play through the branches. This was done around the Spring Equinox 'Ostara'

DYLAN RYAN

Vitruvian Boy

The work represents the metamorphosis of the body and mind from infancy to childhood to adulthood. How we relate to getting 'square eyes' from too much illumination of tv. Now I am older, I am getting 'square eyes' from a computer screen with nobody to tell me I am sitting too close.



Vitruvian Boy

Photo montage printed on A4 inkjet photo paper.
White A4 frame.
Photomontage printed on Digital Transferfilm A4 over a 25 watt lamp.
Lamp is 22cm x 13cm x 10cm

DEIRDRE KEARNEY / MARIE SHERIDAN



Independent Probabilities

Probability theory is concerned with the analysis of random phenomena. The result of a random event may be any one of several possible outcomes; considered to be determined by chance. This artwork comprises six independent images hung from a steel frame. Each artist provided three images; these images were transferred onto Perspex grounds and hung, one behind the other. The images used by both artists portray six women, some familial and some historical, in whose lives chance has played a significant role. The role of chance is explored in this artwork. Each image stands alone but may also be manoeuvred by the viewer to combine with other images and thereby metamorphose, independent of the artists' hand.

Independent Probabilities

Steel, perspex, acrylic print
50cm x 70cm x 30cm

DARINA MEAGHER / CATHY O'REILLY HAYES / ANNMARIE WEBB



Transmutation in Three Parts

A collaborative work made during the pandemic A sharing of truths, laughter, experience and ideas. Pivotal to our work was the realisation of failure or of not 'attaining perfection' or of always being 'fixed/improved', by Church, Family/Society in our formative years. As household demands grew, we became more excited to experiment, exploring rage and the domestic. Our installation work took place outdoors where we created totemic sculptures from crockery, and saw how the act of creation quickly morphed into destruction, using baseball bats and other implements we smashed our works in a cathartic act of anger, spontaneity, joy and release. We present 3 sculptural pieces our individual responses, a remaking, or reinventing of the perfect.

Transmutation in Three Parts

Photographic Images 3 x A1
Sculptural Work x3
(All made from broken crockery)
Different sizes all less than 40x40cm sq

DONNA MCGEE / SARAH ANNMARIE BOYLE



Skellig Michael, Co. Kerry dates back to pagan times and is the site of a monastic settlement. It was used by hermits during the medieval period and was a much-noted place of pilgrimage. It also has a great bird colony of mainly gannets and puffins. It was granted UNESCO World Heritage Site in 1996. Its metamorphosis has continued down through the years to becoming a filming location for Star Wars and pollution levels have recorded the bird colony making nests from discarded plastic from the sea.

DONNA MCGEE

Skellig Michael

Oil on canvas
24" x 12"

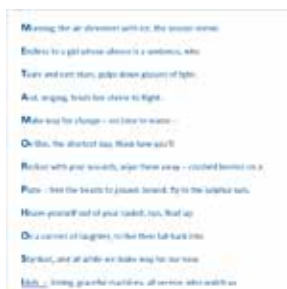
SARAH ANNMARIE BOYLE

Caught Fishing

Oil on canvas
18" x 22"

€320

ERIKA MCCOLL / CATHY DILLON



'Winter Solstice'

In image and words, Erika and Cathy explore metamorphosis with specific reference to a young woman's experience as she negotiates the passage from girlhood to womanhood. Their piece also refers to the end of the current Anthropocene (industrial) era and the global move into the digital era, and the coming of AI, as envisaged by American poet Richard Brautigan in the 1960s and scientist James Lovelock in the present day.

ERIKA MCCOLL

'Winter Solstice'

Oil on canvas
100cm x 100cm

CATHY DILLON

'Winter Solstice'

Printed on watercolour paper
34cm x 34cm

€2,450

GABY BROWETT / ERIKA TYNER / KIMBERLY DUNNE- FLEMING / SANDRA SCHOENE



'Metamorphosis'

This is a collaborative response to how women in Irish history have embraced metamorphosis in some form to overcome adversity and thrive.

GABY BROWETT

In Homage to the Influence of unusual and wonderful women in Irish history this piece is a celebration. I make visual reference to the Non Conformist chair of Eileen Gray, the lunar crater Clerke named after Astronomer Agnes Mary Clerke, the stained glass windows of Evie Hone and the legacy of Irish Nationalist Eva O'Flaherty, a milliner and Parisian model who founded a successful knitting industry on Achill Island making high fashion garments.

ERIKA TYNER

We are from the Earth, giving life, survivors, Goddesses of our time.

KIMBERLY DUNNE-FLEMING

These photos represent almost 100 years in generations of the women in my family. The images are blemished, blurred, a reference to women's experience under colonial rule, religious attitudes and societal mores of the time.

SANDRA SCHOENE

Heroic stories of goddesses and pirate queens, legendary and powerful women, often united in their fatal destiny, were led by fearlessness, courage, strength, wisdom, skill, passion and love. Each pyramid reflects on a different trait, using distinctive symbols and a corresponding colour.



Metamorphosis

Mixed media on wooden three sided pyramids.

Large pyramid (x1 pyramid)
1.5m Wide, 2m Height, 3 sided.

Small pyramids (x3 pyramids)
37.5cm wide, 50cm height, 3 sided.

€500 for each pyramid

KATE COLEMAN / TARA O'REILLY



TARA O'REILLY

Oil and graphite on
Fabriano paper
70cm x 100cm

€500 each

KATE COLEMAN

Oil
123cm x 46cm

Mahatma Ghandi said famously **"We but mirror the world.."**

Metamorphosis of the human spirit occurs due to internal and external responses to life, mirrored by the emotions of the observer.

Tara presents a series of changing images of those close to her responding to the Covid pandemic. Kate presents a series of captured moods in brief oil sketches.

The observer is invited to witness their own metamorphosis as their spirit mirrors what they perceive.



LENORE COLLINS / PAULA O'RIORDAN / MO ROANTREE

We collaborated for 14 months with a zoom meeting every Monday where we would share the work, we did that week on our own based on the discussions from the week before.

Over this period, we discussed Change as it happens in life but also with the added circumstances that we found ourselves in during Covid lockdown.

Our final work culminated in three unique mixed media pieces with the idea of Metamorphosis happening between 3 different people's interpretations and evolving into a combined vision.

LENORE COLLINS, PAULA O'RIORDAN & MO ROANTREE

Metamorphosis

3 mixed media pieces, on paper, canvas and board

80cm x 80cm

€1,300 each



CABRINI LYNCH / LAURA O'HAGAN

CABRINI LYNCH

LAURA O'HAGAN

1. Hermetic Glyphs in azure

2. Crusoe's Epiphany

3. Litholitus

Layered ceramic relief, painted with oxides and glaze

50cm x 50cm



'Metamorphosis'

The ever-changing forms of sea and sand along the shore gave the artists Cabrini Lynch and Laura O'Hagan a context for their work on the theme of Metamorphosis. By taking casts of drawings in the sand it allowed the artists to encapsulate them into abstract forms evoking impermanence.

KEN JENNINGS / MARIJKE MCCORMACK

KEN JENNINGS
MARIJKE MCCORMACK

Darkness to Light

Layered ceramic relief, painted with oxides and glaze

40.5cm x 30.5cm

€250 each for the last two

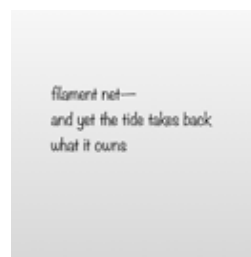


'Darkness to Light'

"This series of four paintings focus on life on the streets & public spaces in Dun Laoghaire during COVID. They describe the metamorphosis of our experience during this time starting with the greyness & desolation of our empty streets as seen in paintings 1 & 2 by Ken.

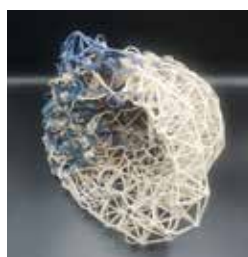
In paintings 3 & 4 by Marijke we see the first venturing out, though still with an ominous feeling described by the ochre sky, in painting 3. In painting 4 we finally emerge into the sunshine where family & friends can finally be together"

MARY WHITE / MAGDOLNA TOTTH / NATHALIE CARNEC



MARY WHITE
Haiku

Rice Paper
30cm x 30cm



MAGDOLNA TOTTH
Revival

Paperclay, glazes, oxides, seaglasses
28cm x 34cm



NATHALIE CARNEC
Carved Bowl

Wire
20cm x 40cm

When Magdolna Totth's paper clay bell broke she began to weave a colour glazed clay in the reconstruction. There is extra strength in the repair.

Nathalie Carnec imagined the feeling of a bowl carved in wood and organically wove her bowl into a free lightness, openness and modernity.

Mary White wrote her haiku in response to the many conversations between the two Artists about their process.

All three sought a lightness in their work transforming heavy materials.

PAMELA DE BRÍ / PAULA FITZPATRICK

'Overlay'

A Collaborative Triptych. Interacted, exchanged, remade plates and paper. Working around the concept of Metamorphosis to produce an integrated Triptych of original etchings.

PAMELA DE BRÍ
PAULA FITZPATRICK

Overlay

Triptych: Original Fine Art Etchings on Hand Made Paper

1.2m x 2m



PHILIP MURPHY / LINDA UHLEMANN



LINDA UHLEMANN

Tide coming in

Print

70cm x 90cm

PHILIP MURPHY

Swimming in the Surf 1, 2 & 3

Linen on canvas

35cm x 45cm

Philip Murphy is a sculptor . Linda Uhlemann a printmaker

Our work Metamorphosis is exploring infinite aspects of the sea. Tides, waves , shorelines , seabeds, storms, calms, the pleasures of swimming and tragedies of drowning.



JEROME PEARSON / PHIL STEWART / FIONA O'FARRELL



JEROME PEARSON

Leadmines

Oil on canvas

10cm x 10cm



JEROME PEARSON

Killmaccurragh

Oil on canvas

10cm x 10cm

JEROME PEARSON

The metamorphosis at play in the subject matter becoming imagery through symbology, such as the rock which has a reputation of being unchanging and solid yet is split open for resources. Crane is a symbol of industry, expansion and civilisation.

PHIL STEWART

The events that happen during metamorphosis with insects and plants are very appealing to me. Although tiny happenings in science they are momentous in creativity and design.

FIONA O' FARRELL

Imagine a naturalist collection unknown natural resources in South East Asia. What would be in their Cabinet of Curiosities? Has there been a metamorphosis during the last 120 years, before there were cars and nuclear energy.



PHIL STEWART

Advance

Acrylics

25cm x 30cm



PHIL STEWART

Scatter

Acrylics

25cm x 30cm



PHIL STEWART

The Spawn

Acrylics

25cm x 30cm



FIONA O'FARRELL

Biodiversity Collection 1904

Assemblage of wood silk and ceramics

65 x 40 x 15cm



FIONA O'FARRELL

Island selection of native artefacts

38 x 30 x 5cm



FIONA O'FARRELL

Cabinet of Curiosities

Free standing box containing bark minerals with wildlife collection

38 x 45 x 35cm

PAULA WEIR / JACQUELINE NICHOLSON



PAULA WEIR
Blue Light _
Evening Shift

Photograph on acrylic

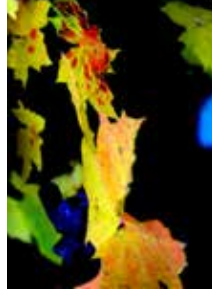
A1



PAULA WEIR
Cellular
Abstraction i

Photograph on acrylic

A3



PAULA WEIR
Cellular
Abstraction ii

Photograph on acrylic

A3



JACQUELINE NICHOLSON
Shifting Light

Pen on Tracing Paper

85cm x 150cm

Our work is a response to abrupt shifts in a subject's aesthetic created by changes in light, space, time or season creating a striking alteration.

(Our concept draws on the primary definition of Metamorphosis & shifts in cellular structure*

*Source: Webster Dictionary, Britannica)

Paula is working in the medium of photography each piece is the exaggerated abstraction of cellular structure.

Her work focuses on small unnoticed details and beauty in the everyday.

Jacqueline's detailed mark-making on paper is in response to her collaborative partner's observation.

JOYCE DUFFY / IRIS O'CONNOR / MIRIAM SWEENEY

'Absence'

Each triptych represents changes brought about by Covid; the starkness of a normally busy department store with its windows 'whitened' out; the distortion of time; the place where seeds of hope are found.

JOYCE DUFFY / IRIS O'CONNOR / MIRIAM SWEENEY

Absence

Encaustic on board x 3

Acrylic on board x 3

Mixed Media on board x 3

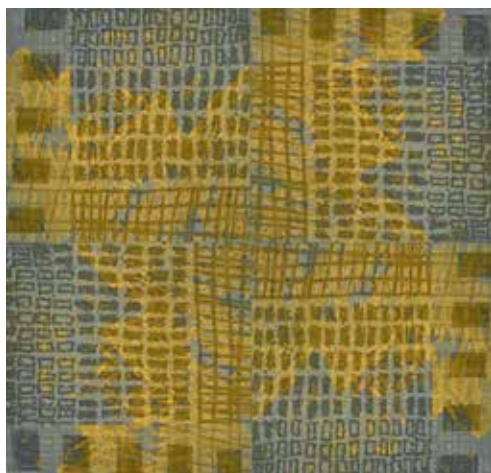
100cm x 100cm

9 Individual panels 25cm x 25cm

POA



NANCY PREVIS / ANN KAVANAGH



'Passages'

Ann's work is informed by architecture and manmade structures, Nancy's work is informed by organic forms found in nature. Following consultation and interaction, each artist made a square etching based on their personal practice. Through the use of digital overlay and repetition, the work of these two artists has been merged and their individual representations transformed.

NANCY PREVIS / ANN KAVANAGH

Passages

Archival Digital Print, Edition of 10

40cm x 40cm

€280

ORLA KAMINSKA / COLE JENNINGS

'Brittle Ascent'

The collaboration with Cole Jennings and Orla Kaminska centres around Cole's short stories, which explores the cyclical nature of loss, hope and resilience in humanity. Orla's response to these writings parallel her explorations around themes of erosion, decomposition and patterns in the natural world, which are expressed by creating fragile but strong forms in porcelain and fine wire.



ORLA KAMINSKA / COLE JENNINGS

Brittle Ascent

Porcelain & Wire Mounted On Wood

87cm x 23cm x 4cm

PATRICK MOLLOY / LINDA PLUNKETT



'Winter Oak'

Photographer Linda Plunkett and Designer Patrick Molloy have formulated a visual and physical expression of "Metamorphosis" as engaged in by the propagation, recycling and upcycling of trees. In our presentation, the arboreal representative Oak Tree is presented in an adaptation of a Japanese Shoji Screen as a piece of wall art.

Our piece is composed of a photographic image of an Oak Tree printed on Japanese Kozo paper, mounted on Hanhnmuhle paper, which in turn is mounted on a 5mm sheet of foam board.

The mounted image is presented in an Oak frame in the style of a Japanese Shoji screen measuring 602mm high X 1032mm wide X 100mm deep.

€2,250

NIKI COLLIER / VERONICA HEYWOOD



NIKI COLLIER Phoenix Wings

Silk and wool
1m x 3m



VERONICA HEYWOOD Phoenix Rising

Watercolour on paper
30.48cm x 40.64cm

NIKI COLLIER

These is collaboration between myself and a photographer as well as Veronica who had input on the crown, which I have sculpted inspired by her drawing.

VERONICA HEYWOOD

Fionn Uisce, Dublin's great park's real name

Misinterpreted by long demised viceroys as Phoenix

Enclosed in 1662 by the Great Duke of Ormonde

For Charles II Hunting Ground

Opened in 1747 by Lord Chesterfield

As a Pleasure Ground for Public recreation.

Now Niki is the true Phoenix,

Surmounting many challenges,

Truly rising from the ashes.

Prices are POA

KATHERINE BROPHY / ISEULT MCCORMAC

LA BRUJA

THE MORRIGAN, A Marriage of Image and Story.

The Morrigan, goddess of chaso and renewal, is angry. Humans are destroying the planet. She decides to teach them a lesson.

La Bruja

Video



MARY O'CONNOR



Mary painted this panel at the entrance to Walters. It is a permanent installation.



Rise

Painting on gesso panel
20cm x 25cm

€365 each panel



Fall

Painting on gesso panel
20cm x 25cm

JACKIE BALL

'Are we there yet?' from the Small Talk Series

We never really know what people are thinking or what is going on behind the facade they present to the world. Jackie is fascinated by this concept and it is a central theme to her current body of work. By creating heads which are androgynous and expressionless, Jackie is free to experiment with ways of expressing how different thoughts and emotions can be visually interpreted.



'Are we there yet?'

Ceramic, Copper, Concrete
55cm x 20cm x 20cm

€1,100

ACKNOWLEDGEMENTS

ArtNetdrl's Collaborative Exhibition Metamorphosis is being hosted in the newly restored Walters Public House in Dun Laoghaire. The interior and gardens, which were designed by local architect Ross Cahill O'Brien have been beautifully restored by Jay Burke and his team. ArtNetdrl would like to thank Jay Burke for hosting this exhibition

The artists collaborated over eighteen months on the theme of Metamorphosis. Artists were grouped together from different disciplines. For example, a painter with a poet, a sculptor with a writer, a painter with a printer etc. Covid 19 restrictions were in place for most of this time. Artists collaborated on zoom, out walking, responding to each other's work by email etc.

The ArtNetdrl Committee would like to say a very special Thank You to:

- All the participating Artists
- Jay Burke and the Management at Walters

- Darina Meagher and the Metamorphosis Collaborative Exhibition Committee for organising the Metamorphosis Collaborative Exhibition
- Louise Neiland for curating the hanging of the Exhibition
- Lenore Collins and Paula O' Riordan for organising and assisting the hanging of the Exhibition
- Lenore Collins for designing the Metamorphosis posters and Catalogue / design4now@hotmail.co.uk
- Roland Mahon for Photography
- Martyna Starzinskaite for Administration, social media, and our website
- The ArtNetdrl Committee

For more information on the artists and their work please either visit www.artnetdrl.ie or email arnetdrl@gmail.com.